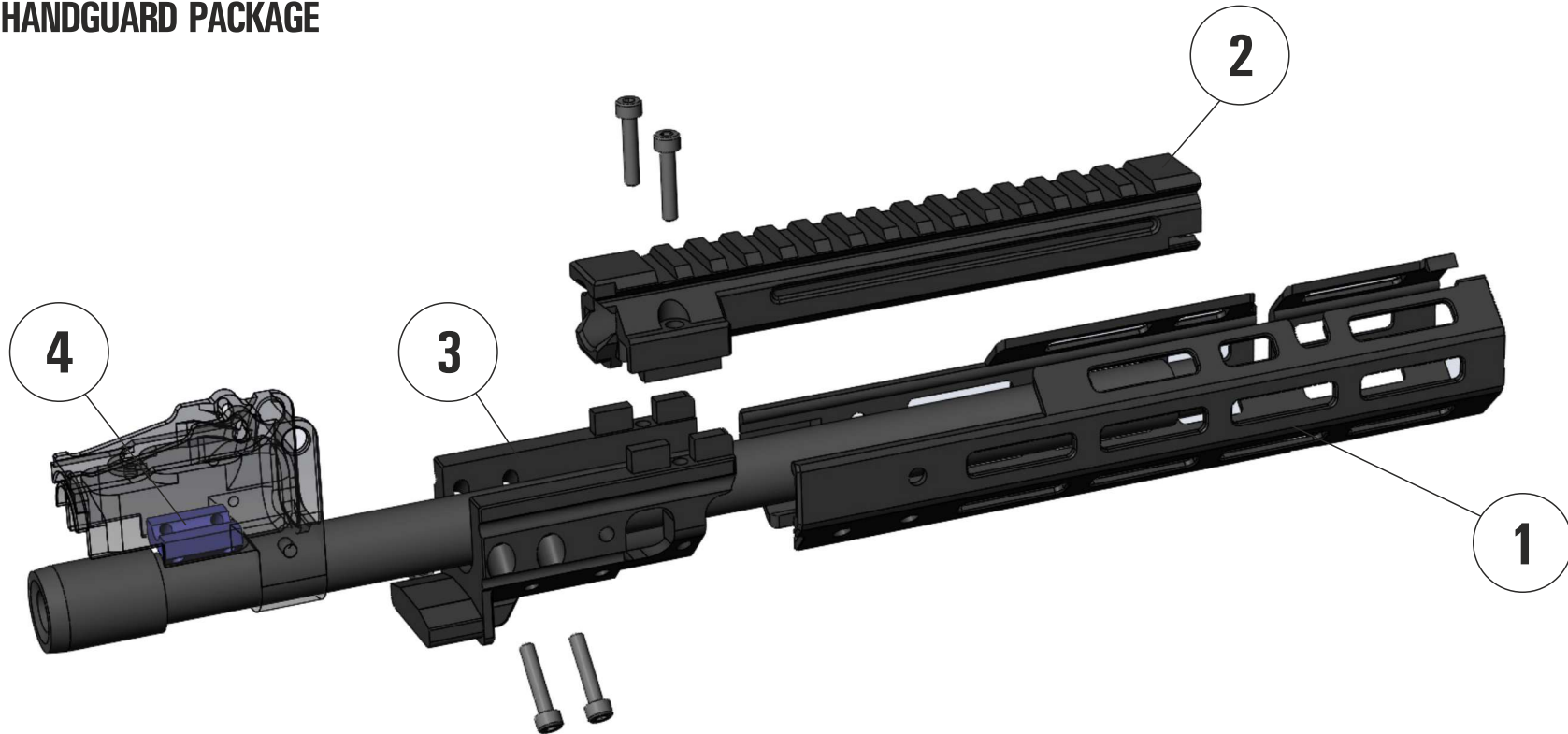




**SURESHOT ARMAMENT MK1 MLOK HANDGUARD**



## Mk1 HANDGUARD PACKAGE



Handguard package includes

1. MLOK Forend short (with cutouts for standard AK slingloop) or long (no cutouts)
2. Railed Gastube
3. Gastube and Foreend base
4. Steel Hardened RSB insert
5. 4 x M4x20 DIN912 screws to connect Gastube and forend base with RSB insert
6. 7 x M5x8 DIN912 screws to fix foreend on forend and gastube base
7. 2 x M5x20 DIN912 screws to fix Gastube to the forend and gastube base



## Mk1 HANDGUARD FEATURES



1. PACKAGE WEIGHT (NO CREWS)
  - 356 GRAMS (SHORT FOREEND)
  - 387 GRAMS (LONG FOREEND)
2. HANDGUARD WITH 43.5MM, HEIGHT - 60MM
3. INSTALLATION TIME - 15 MINUTES
4. NO MODIFICATIONS TO THE ORIGINAL RIFLE REQUIRED (SHORT FOREEND)
5. FREEFLOATS THE BARREL IN CASE STANDARD HANDGUARD BRACKET IS CUTTED OFF
7. AIMPOINT MICRO, INSTALLED ON THE RAILED GASTUBE IS 1/3 CO-WHITNESS WITH IRONS

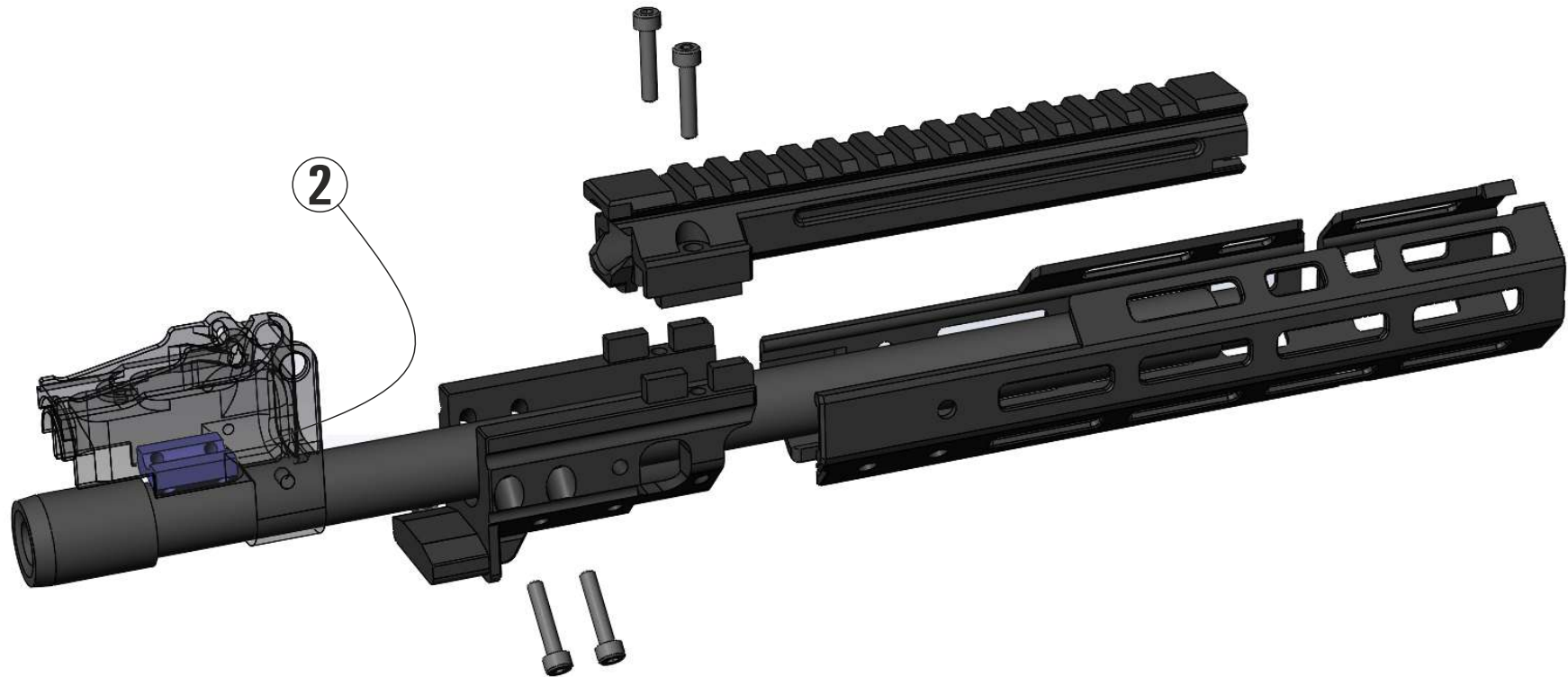


**SURESHOT ARMAMENT  
MK1 HANDGUARD  
INSTALLATION MANUAL**

**ATTENTION! MAKE SURE WEAPON IS UNLOADED AND THERE IS NO LIVE ROUND IN THE CHAMBER!  
YOU ARE THE ONLY PERSON RESPONSIBLE FOR YOUR OWN SAFETY!**



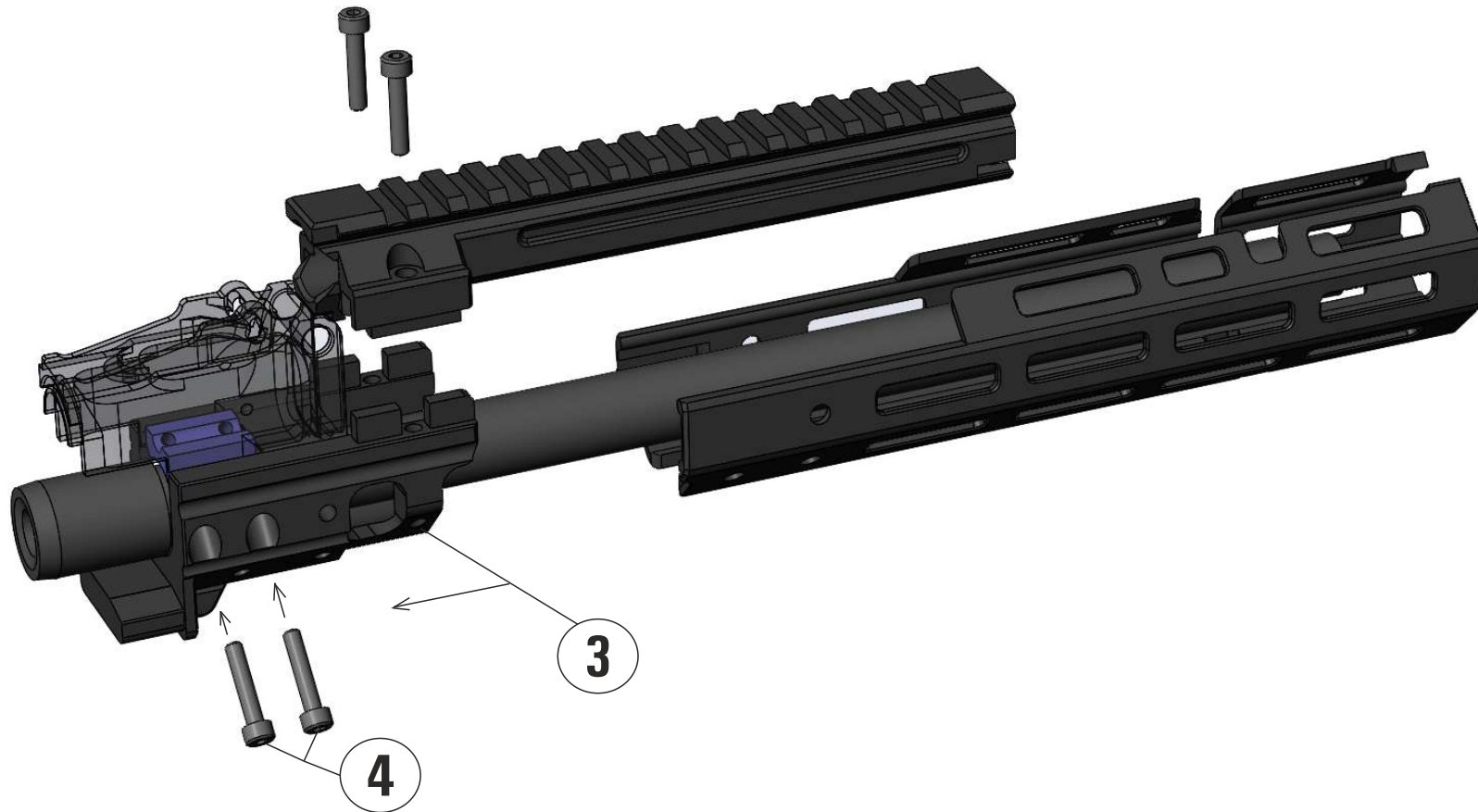
## Mk1 HANDGUARD INSTALLATION



1. ORIENT RSB INSERT THE WAY THE CUTOUT IS FROM THE "BREECH" SIDE OF THE RIFLE
2. SLIDE RSB INSERT INSIDE THE RSB TOWER FROM THE FRONT OF THE RIFLE



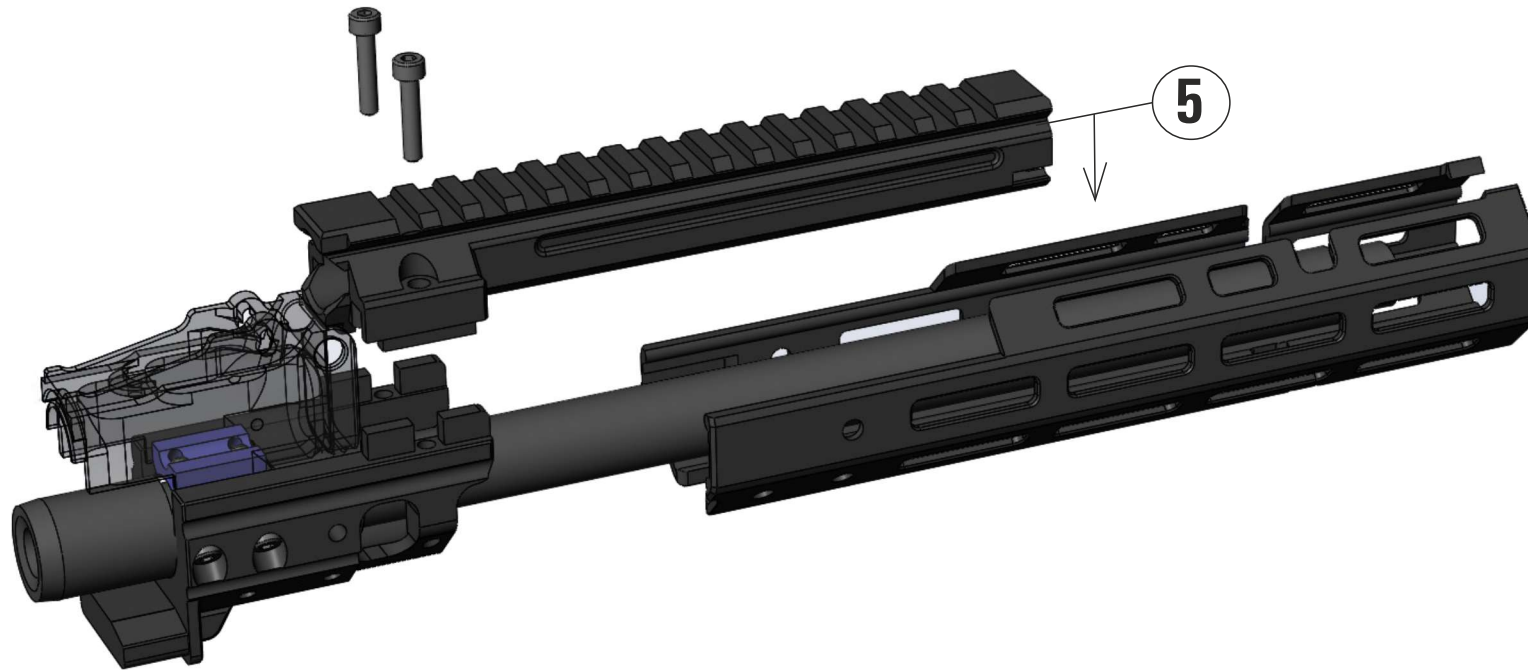
## Mk1 HANDGUARD INSTALLATION



3. SLIDE GASTUBE AND FOREEND BASE TO THE RIFLE FROM THE FRONT TO THE MOMENT THE "TOOTH" WILL GO UNDER THE FRONT TRUNION AND THE HOLES WILL ALIGN WITH THE CORRESPONDING HOLES OF THE RSB INSERT.
4. FIX BASE TO THE RSB INSERT WITH PROVIDED 4X M4X20 DIN912 SCREWS (DO NOT TIGHT IN THIS STEP)



## Mk1 HANDGUARD INSTALLATION



**5. INSERT GASTUBE INTO PLACE, MAKE SURE IT CONNECTS TO THE BASE CORRECTLY**



## Mk1 HANDGUARD INSTALLATION



6. FIX GASTUNE TO THE BASE WITH PROVIDED 2X M5X20 DIN912 SCREWS. TIGHT THEM TO THE 30LBS\INCH
7. TIGHT 4X M4X20 DIN 912 SCREWS FROM THE STEP 4 TO THE SAME TORQUE AT THIS STEP





## Mk1 HANDGUARD INSTALLATION



**8. SLIDE FOREEND ONTO THE FOREEND AND GASTUBE BASE AND FIX IT TO THE BASE WITH SUPPLIED 7 x M5X8 DIN912 SCREWS. HANDTIGHT.**



## Mk1 HANDGUARD INSTALLATION



**9. INSTALLATION COMPLETED**



## Mk1 HANDGUARD INSTALLATION



**10. PUT YOUR RED-DOT ON THE GASTUBE AND PROCEED TO THE RANGE TO ZERO IT**



[WWW.SURESHOT-ARMAMENT.COM](http://WWW.SURESHOT-ARMAMENT.COM)

[INFO@SURESHOT-ARMAMENT.COM](mailto:INFO@SURESHOT-ARMAMENT.COM)

2019